

# Installing MechoShade Systems' top hook SnapLoc® fascia

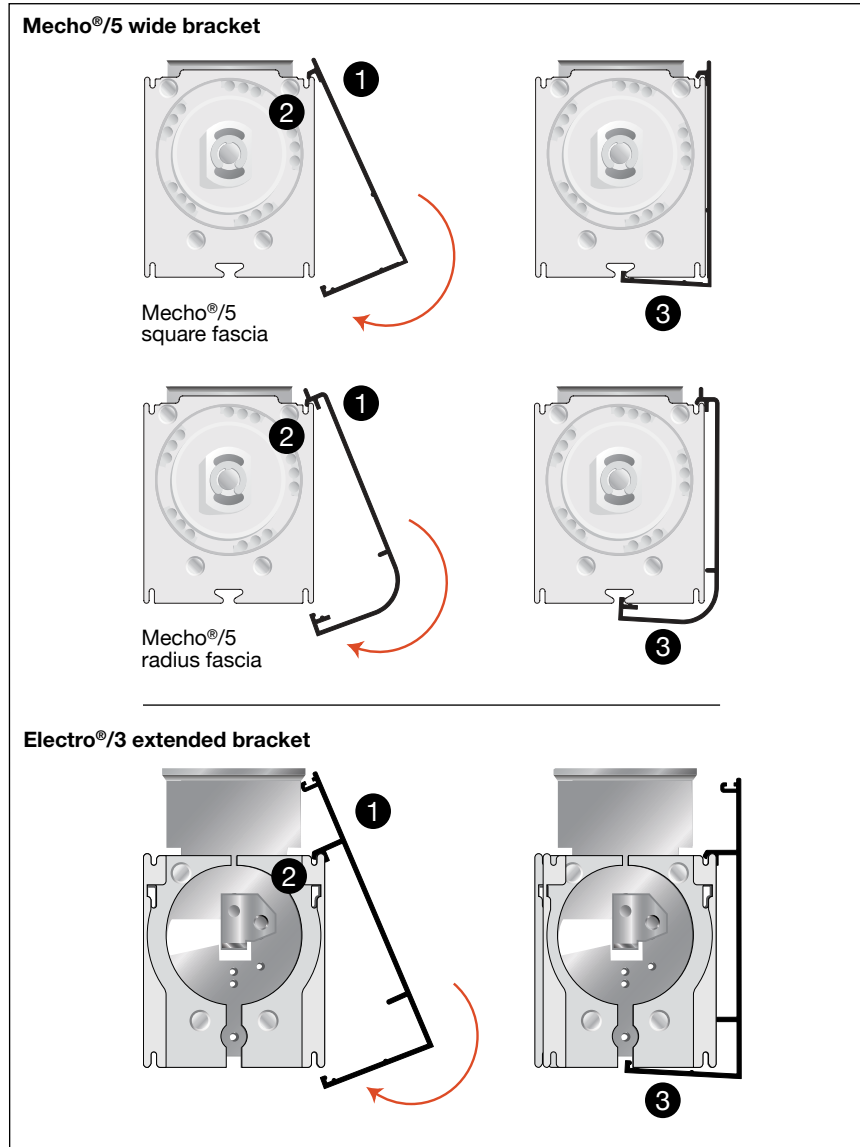
## Electro®/3 extended and Mecho®/5 wide brackets

Regular roll shades only.

### Installing fascia

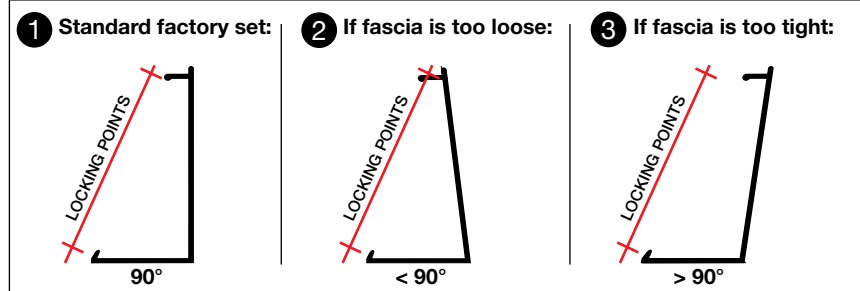
1. Insert the top hook of the fascia into the space between the ceiling and the plastic housing as shown.
2. Engage the top hook onto the bracket lip.
3. Push the lower part of the fascia forward until the bottom hook snaps into the square opening of the bracket. This is to be performed at both ends of the fascia.

**Note:** If installed in reverse (wrong order, ie. bottom first and top second, the fascia will spread and not lock properly onto the brackets.



### To tighten or loosen fascia

1. The standard factory set angle of fascia is 90°.
2. **To tighten:** Compress (decrease) the angle of the fascia.
3. **To loosen:** Spread (increase) the angle of the fascia.



MechoSystems Inc.  
Corporate Headquarters  
42-03 35th Street  
Long Island City, NY 11101

T: +1 (718) 729-2020  
F: +1 (718) 729-2941  
info@mechoshade.com  
mechosystems.com

# Removing MechoShade Systems' top hook SnapLoc® fascia

## Electro®/3 extended and Mecho®/5 wide brackets

Regular roll shades only.

### Removing fascia

1. Pull down on the underside horizontal edge of the fascia with both hands as shown. This must be done at both bracket locations to release the fascia properly.
2. Rotate the bottom of the fascia down and forward away from the bottom of the brackets.
3. Lift the top hook so that it clears the bracket groove and remove the fascia from the brackets.

